



Your transcript

How to Design and Build an Energy Efficient, Zero Carbon Home, with Melanie Lupis, Sustainability Certified [Part 2 of 2 Episodes]

PODCAST EPISODE #263



Undercover
Architect

Hello ...

I'M AMELIA LEE,
THE ARCHITECT
BEHIND
UNDERCOVER ARCHITECT



New home or renovation on the cards?

Chances are you're worried about what it will cost, if you can afford it, and how you'll avoid a budget blowout.

You're also probably nervous about how much time it will take, and how it's going to fit into your already busy life (#serialjuggler!).

And obviously you don't want to stuff it up, and end up with a home you wish you did differently. Who needs those regrets, hey?

I'm Amelia Lee, and I'm a wife, a mum and an award-winning architect with over 27 years industry experience in over 250 homes (including 3 renovations of our own homes).

I'm here to share the detail and insights on how to create a home that feels great, and that you feel great in. From understanding the cost of renovating and building, to insider know-how and step-by-step advice, Undercover Architect will help you get it right, simply and with confidence.

Whoever you're working with, and whatever your dreams, your location or your budget, consider Undercover Architect your secret ally.

Here's to helping you create the perfect home for you and your family ...

- Amelia, UA x

EPISODE #263



Hello! This is Episode 263, and in it, I'm continuing my conversation with Melanie Lupis from Sustainability Certified.

If you haven't listened to Part 1 yet, you can find it in Episode 262. Just head to www.undercoverarchitect.com/262 to listen now or download the free PDF transcript.

As we continue the conversation in this episode, Melanie shares with me her thoughts on NatHERS and Passive House. Being certified to assess with both modelling tools, she has great perspective to share on them both.

We also talk about the True Zero Carbon Challenge that Design Matters National ran in 2022, and Melanie entered with building designer, Lachy McEwan, from Harmonic Design.

The aim of the True Zero Carbon Challenge was to design a home that not only produces more power than it uses over the year; through energy-efficient design, careful appliance selection, and photovoltaic integration. Entries also had to consider and calculate embodied carbon in material selection, and to put on enough extra photovoltaic panels to pay back the home's entire carbon debt by 2050* (based on today's carbon intensity).

Thermal Performance Assessors or Energy Efficiency Assessors, as they're also known, paired up with Building Designers and Architects to create a home design and assess its energy efficiency and carbon footprint.

At the time of recording this episode, Melanie and Lachy had submitted their entry, and were waiting to hear the results.

Well, I'm super excited to share that they were declared the NSW State Winners - isn't that fantastic!

You'll hear Melanie talk more in detail about how she and Lachy worked together to design and assess the home in preparation for entering, and what insights it gave her for all home designs. I think you'll find it really interesting.

Now, let's dive in!

Let me remind you a little about Melanie.

Melanie Lupis is an environmental enthusiast, nature lover and mum. She works as a Home Energy Efficiency and Sustainability Consultant and heads up her own company Sustainability Certified Pty Ltd. She has a Bachelor of Science (Hons) majoring in environmental studies.

Melanie is a NatHERS Accredited Assessor, Passive House Certified Consultant and Residential Scorecard Accredited Assessor. She is trained in BERS Pro, FirstRate5 and Hero Software packages.

With her two daughters about to complete their Environmental Science degrees and with husband Kel running support in the business, Melanie is fortunate to have the opportunity and the means to help educate; eliminate the confusion; and create a shift in mindset towards sensible, sustainable design.

PLEASE NOTE:

The following interview has been transcribed through AI, and will not be 100% accurate. This is particularly relevant when there is a lot of industry terminology in the conversation that the AI bots can't translate or understand precisely.

Timestamping is included so you can refer to (and listen to) the original podcast episode recording to check any discrepancies. The timestamping starts at the point of my conversation with our guest (not from the beginning of the episode itself).

Head to www.undercoverarchitect.com/263 for the podcast episode, or Episode 263 wherever you listen to Undercover Architect's podcast (Spotify, iTunes, Google Play, Stitcher etc)

Amelia Lee 00:00

Now I wanted to talk about your NatHERS ... obviously you do NatHERS assessments, and you're also Passivhaus certified. So you're Passivhaus certified consultant. So what are your thoughts on balancing these because I always find this is a pretty interesting kind of thing where people have a foot in one camp definitely or the other. And people are often choosing I have lots of people in Undercover Architect community who love

hearing about passive house, but then think it's not going to be affordable.

Amelia Lee 00:25

So they're feeling you know, what do they do? How do you see this balanced? How do you kind of get help people navigate through it? Do you find they're coming to you? And they've chosen one way or the other? Like, how are you sort of saying this in your work?

Melanie Lupis 00:37

So just quickly, the reason that I did the Passivhaus course is, I was really surprised that I saw at CSIRO webinar, and it was, you know, Passivhaus versus NatHERS. And, to me, it doesn't make sense, if both trying to achieve the same thing, which is low energy, thermally comfortable homes. Right? So I couldn't understand why why is there this sort of weird, you know, competition. And competition is good sometimes.

Melanie Lupis 01:11

So I went and did the course because I was thinking I can't, I can't decide which one I'm going to be in if I don't know about the other. So I really want to learn and often you hear it, that that Passivhaus is sort of the epitome, so of energy efficiency, and thermal comfort, design everything else. So I thought you know what I'll go on going on. And it's not an easy course, there was a lot to learn.

Amelia Lee 01:36

It's not easy, no.

Melanie Lupis 01:39

But I loved it, and I apply it everywhere, just like so because I've got the residential scorecard, NatHERS, and Passivhaus, I kinda like to think all of them feed into each other. I don't think that they should be in competition at all. I think it's a spectrum, I think that sometimes ... if you can afford Passivhaus fantastic. But that doesn't mean that if you can afford it, that that you know, NatHERS is terrible either, right, you've got some really good opportunities for letters Passivhaus wins in terms of as built verification 100%.

Melanie Lupis 02:18

But if you go down the NatHERS path, and you want to you do choose well in terms of your NatHERS assessor, your design as your whole team so that you know you're going to get a quality build, you can build in that sort of as built verification along the way if you want to. Don't just sort of leave it up to chance. So you don't have to just go with status quo and just go oh, well, good luck. Hopefully I get it right, or they get it right. You

can be heavily involved in that.

Melanie Lupis 02:51

So yes, I think Passivhaus is fantastic. I also think that that is fantastic. So I got a foot in both camps. Like I said, spectrum and then you've got people who, you know, they're just going to do a small amount. Everybody has the limits to what they can achieve, like both financially or what they're wanting to do in their sustainability goals. So I don't think it's an either or. I think it's horses for courses almost, it's up to the person. The same way like I might build a modern house and the next person might choose to build a heritage house. I think we all have different goals and we're so lucky and privileged to have wonderful tools that we can use to optimise these houses. Like it's fantastic.

Amelia Lee 03:41

That's a great way of looking at it. Yeah, it's a great way of looking at it and and so that as built verification that you mentioned for that hearse, how are you getting involved in that at all? Or are you seeing people like how are you seeing that sort of operate inside a build process for people?

Melanie Lupis 03:57

Yeah, so I mean, I would in the future I've got a lot on my plate at the moment but that's I do see it as a as a good area to be in. There are some companies setting up to do that where they'll come in and do a blower door test for you even if it's NatHERS, not passive house, along the way and look for with thermal cameras making sure that your insulation is correct so have a look around see what's available in your local area. You can write in and I know Jeremy Spencer's fantastic at this he's got some documents that you can kind of write it into your building contract that okay at the stage where you've got an insulation on in I want photos of all of that. So you kind of putting the onus back on the builder to provide the evidence along the way so yeah, Jeremy's fantastic at sort of coming up with those lists of things that you need to check along the way. So

Amelia Lee 04:55

Yeah, I think you're gonna need to clone yourself Mel because I can imagine and you've got lots of different things that you want to be doing, because you're so passionate about people getting this right and about helping people do that.

Amelia Lee 05:05

So now, before we wrap up, I wanted to talk with you about the true zero carbon challenge, because you recently were involved in that as an energy efficiency assessor. And it was a, it's a challenge that's been hosted by Design Matters National. And I'm just

going to read this, “the goal of the competition is to design an operationally net positive home, but also consider and calculate payback period for the embodied carbon in material selection, and that payback period has to be before 2050. The winners are going to be announced November 22.

Amelia Lee 05:36

So we’re recording this sort of halfway through October. So. But by the time this episode comes out, I was explaining to Mel, I’m trying to get ahead on all of my Christmas episodes, because the end of school term always eats all of my time. So I’m getting ahead, I learned the hard way last year, so I’m getting ahead this year, so but I yeah, I’m looking forward to hearing who those winners are, and being able to share that with the Undercover Architect community.

Amelia Lee 06:01

Because, you know, speaking with Jeremy about this, when I, you know, this was just about to be announced when I interviewed him, and he was really excited about it, because he could see that it was just going to be this fantastic, you know, testbed for so many concepts and ideas and actually demonstrating how feasible they are.

Amelia Lee 06:18

And also, I think the the joy and the importance of that collaboration between the designer and the energy efficiency assessor to get this right. So what are some of the things that you’re participating in this challenge really highlighted for you and taught you and opened your eyes to, you know, unexcited you about about being involved, because I can imagine, it was a lot of work to add to everything you’re already doing.

Melanie Lupis 06:42

It was it was a lot of work. But it was also just such a wonderful learning opportunity. So Jeremy did a lot of the training, which was fantastic. Even things I thought I knew he really was able to expand on those things. Design Matters. Awesome. They, you know, they’re taking on this new era of embodied energy, and trying to train up their TPAs and building designers so that we kind of got a head start on this.

Melanie Lupis 07:16

Operational energy is sort of, because we’re going to more and more renewables, it’s sort of fading out as our focus and the next frontier is embodied energy of the building, which we’re making decisions on now, which will be there for a long time.

Melanie Lupis 07:34

I loved the process, I work with Lachy McEwen from Harmonic Design. And he's fabulous. So he's, I mean, I got a little bit lucky because he's already in tune environmentally. But what you often find with a NatHERS assessor and building designer or architect is, it's kind of like we were talking about before, once it's late in the design process, that that a thermal performance assessor gets the design, it's really in a 'fix it' mode.

Melanie Lupis 08:03

So there can be this sort of animosity that the building designer or architect is, is coming up with this amazing design that's beautiful and functional, and he comes to the thermal performance assessor ... Now you got to do double glazing, now you got to put more insulation, you got to do this, this and this, right. So it's kind of loggerheads. But when you can get together at the start of the process, that just flips the whole thing on the head.

Melanie Lupis 08:27

So Lachy and I would have weekly meetings, and it was really interesting for him to see how the natters software works, because we just have a Zoom meeting. And it's like, okay, well, let's just change a little bit here, and then recalc it, and then you go, Oh, wow, I didn't think that that would really impact it that much. Or, you know, some things that you think are going to impact that have no impact. So he could really get an insight into the NatHERS software and how it thinks, which you know, is traditionally just sort of, we work quite compartmentalised between the NatHERS assessor and the designer. So yeah, it was fantastic.

Melanie Lupis 09:09

And, and we really wanted to work hard on it. And he's very passionate. We, we, we went for some ... we tried to stay with sort of a traditional design, sorry, build design in terms of making it so it's accessible for any sort of builder to come along and build it. But we did go for 140 mm stud, which I don't know if your listeners know but that's a that's another really good solution. Where we have a traditionally a 90mm stud you can only get two and a half in the walls for insulation, R2.5, instead you get a R4 straightaway. And we put in some I know that you've had Durra Panel on your program, so we used Durra Panel, it's a fantastic product.

Melanie Lupis 09:56

And yeah, just working along, doing the calculations from with The Footprint Company into the embodied energy. That was a real eye opener. We sort of I hadn't really done, I'm not a quantity surveyor. But I learnt fast! So that was really interesting to sit in things

that you don't realise have a big impact. I do have a big impact. But this, the good thing is, and obviously, the webinar about BASIX yesterday, because they're going to start tracking embodied energy in the, in the, in the builds that come through,

Amelia Lee 10:38

Oh, wow.

Melanie Lupis 10:39

Yeah, fantastic. But not putting any measurements on it. Yeah, they're just going to start tracking it. So simplified version, not like our complex calculations in The Footprint Company. But once you start measuring it, then you can start making a difference in the future.

Melanie Lupis 11:01

So I think, yeah, and just just starting to see companies come on board with products where they feel like, oh, you know, this, this other, our competitors have already got, you know, a zero impact product. We need to get on board, and we need to develop an EPD that's, you know, able to be put up onto The Footprint Company, website, so people can use it, because that people start choosing from the ones that have already got their information up there.

Melanie Lupis 11:29

So it's kind of, it's just starting that process that companies are starting to realise, yeah, this is a space we need to be so really lucky. Competition is great cross fingers. Yeah. But either way, I think, you know, walk away with something worthwhile, nothing. We're definitely not walking away with nothing, because we've learned so much. And I think it's going to be moving forward, just invaluable knowledge.

Amelia Lee 11:55

And The Footprint Company, they were the ones with the carbon calculator for the embodied energy. So did they train you how to use their calculator? Or were they calculating them for you? How did that process work?

Melanie Lupis 12:06

We had to use it. So both training from The Footprint Company, as well as from Jeremy Spencer, who is Positive Footprint. So don't confuse the two. Yeah, so both, and Jeremy helped us out with spreadsheets, so we could start sort of getting our heads around, how are we going to quantify all of the different products, pull that out, and then put that into The Footprint Company calculator.

Melanie Lupis 12:34

And yes we had to do that all ourselves. Although it then had to be sent off to sort of be audited by The Footprint Company. And then if they're happy that we've sort of done all the right things. And yeah.

Amelia Lee 12:49

And so what climate region was the house designed for in terms of its operational energy, and its thermal performance? Where did you have to locate it?

Melanie Lupis 12:58

Yeah, so we've thought about this a little bit. But you know, he's from Adelaide. I'm from Sydney. The we achieved nine star Adelaide and 10 star in Sydney.

Amelia Lee 13:07

Wow. Yeah.

Melanie Lupis 13:08

So, we were excited about that. We opted for Sydney in the end. I don't know why I won, but I did. Anyway, yes, it was interesting to see that but so this is maybe a little bit off track. But in terms of it's a 10 star house in Sydney, a 9 star house in Adelaide, but Adelaide makes more solar, because they have a better climate for solar. So yeah, because we had to put the equivalent photovoltaics on the roof to pay back the embodied as well as the operational energy. And then, and then some.

Amelia Lee 13:49

And so even getting down to that granular level of looking at, okay, we get better solar in Adelaide, but we get the nine stars, so we're going to have to offset it with more solar. To compensate for that nine star energy efficiency rating, we get less solar, you know, ability capturing ability in Sydney, but we get the 10 stars, so we're going to require less.

Amelia Lee 14:08

So like that must have been even that must have been a really interesting exercise. Does it like Did it change the number of Did you examine how many it changed in terms of the number of panels you need or anything like that?

Melanie Lupis 14:19

Well, in the end, we stuck with the same amount of panels because we were happy with the design. But yeah, it's and then even because we had to do the whole of home as well. Right? So that's, that's putting a number on the operational whereas NatHERS is typically

just the thermal side of it. That's the you know, it tells you that heating and cooling in mega joules, but then when you start putting through whole of home, which as you know will be part of the NCC next year. You're starting to be able to quantify a lot more because you can put in what air conditioning system, the star rating of that, one hot water heaters that you're putting in, the stove, all those sorts of things, so you're starting to really be able to get some really good data. Yeah, that was kind of the whole range. So it's fantastic.

Amelia Lee 15:14

I just love how how informative and transparent it becomes for the homeowner, you know, I talk regularly about being able to make data driven decisions, because home design can feel like such an aesthetic, esoteric, you know, kind of, you know, sometimes even dark art in the way that, you know, spaces get created, and things get laid down, but you're working with such physical real things. And so to then sort of be able to, to overlay, those kind of, you know, feeling and functionality and flow, and you know, all the stuff that we talk about on Undercover Architect, we then okay, if I choose this versus this, it's going to cost me this much difference, but it's going to save me this amount of money, and I'm going to be able to, you know, do this, this and this, and that's going to mean this star rating. And, you know, it just it's it can give so much more confidence to a homeowner that they're making the right choices for themselves. And they can, because everybody's got different value propositions, you know, is what one person thinks is expensive, another person won't, because they've got different priorities. So just be able to nuance that for and tailor it for your own choices. is so exciting.

Amelia Lee 16:19

And as you said, as as, you know, places like The Footprint Company, and you know, carbon lists like this become more and more relevant and used by homeowners companies will see that they have to get themselves on these lists that they have to actually go through the exercise of examining their materials.

Amelia Lee 16:37

I just saw on Instagram, Matt, rising from the build network in in the USA does a lot of amazing videos on, you know, high high performance homes in the States. He was inside a home that was made from cross laminated timber, and they were using cork insulation on the outside of it. And I was like, and then this company was talking about that they're creating the cork insulation. And I was like cork insulation, of course, but like, you know, like that kind of stuff. And you just think, Oh, it's just awesome to see this snowball effect. I really do feel like we're getting some momentum on it.

Amelia Lee 17:06

So do you feel that too? Do you feel like you're at the cusp of, you know, some really exciting times?

Melanie Lupis 17:11

Yes, absolutely. So like I said, I worked in greenhouse gas emission reduction in the late 90s. And I know that a lot of people say, you know, things are terrible. And, honestly, we have come a long way. And I feel like that now the industry is on board, that's the game changer, the end, and they're competing with each other to, to really sort of, you know, I don't want him to beat me at being ... Okay, there's, there's probably some green washing there. But I think that the times are changing, I really do. I'm really positive about it. And once that switch happens, it's, you know, it's a snowball effect, it's, it'll really, it'll really happen. And I think that, you know, we've got a really bright future ahead of us, I really do.

Amelia Lee 18:02

And like you shared on your social media, the ACCC, I've got greenwash on their radar too. So you know, people having integrity around what they claim is going to become not only important, but legislated. So that's going to be really helpful for homeowners navigating this as well, because it can feel like a bit of a bottomless pit when you start scratching the surface of all of the options.

Amelia Lee 18:22

But I think it is that thing of getting the right people around you getting them working collaboratively, feeding you with the data and the information. So then you can make the right choice for you is, you know, because you will have priorities, even if you aren't aware of them just yet, in your project, you'll start to see as these things come out, they have costs attached to them, and you see the meaning of them, then you'll be able to order those priorities for yourself.

Amelia Lee 18:45

So Mel, I have loved this chat. Thank you so much for spending this time with me. And for sharing information. So generously, I'm going to put all of your contact details in our resources. The scorecard assessment, you can, I'll pop a link, you can go on to the website, and you can actually find accredited assessors in your location. And that list is growing, which is really, really exciting. If there's any thermal performance assessors or energy efficiency assessors, same thing, just different names. If there's any of those that want to get scorecard trained, I would highly recommend it. We need more and more performance assessors going into homes, helping people understand what they

can do to improve the performance. And also we need more working collaboratively with designers and with their clients to provide that iterative feedback during the design process where it can really make a big difference.

Amelia Lee 19:34

So Mel, did you have anything else to add before I wrap up?

Melanie Lupis 19:37

No. It was wonderful to have a chat with you. I really appreciate I think you do wonderful work in getting I think I told you when I was doing my Cert4 in Home Energy Efficiency and Sustainability, that your podcast is fantastic at really educating everybody. So thank you for what you do.

Amelia Lee 19:53

Thank you. That's super kind of you Mel. So good to have you here.

Melanie Lupis 19:57

Have a great day.

I hope you found my conversation with Melanie Lupis from Sustainability Certified really helpful for your project.

Before I wrap up, I wanted to add some info about the 'as built verification' we were discussing at the beginning of this episode, and the Passive House process compared to NatHERS and Basix.

Now, when I first discussed Passive House here on the podcast, back in Season 8, it sparked a lot of interest from listeners who weren't aware of it. And since then, I've seen lots of Undercover Architect community members pursue Passive House homes. If you haven't listened to those episodes, I'll pop some links in the resources for you.

One of the things I see homeowners loving about Passive House, as well as the sustainability, energy efficiency, and thermal comfort, is the 'as built verification'. The process of building a Passive House requires the builder to take photos and document construction, as they need to demonstrate that they've built the home as per the design modelling and requirements.

This is something that doesn't occur in conventional construction. Builders don't actually have to demonstrate or prove that they have built your home according to the designed energy efficiency modelling, etc, unless you include it contractually.

Many of my HOME Method members are adjusting their contracts to include specific requirements of the builder in order to add in an 'as built verification process'.

Some of these checks and verifications can include a blower door test, a thermal imaging camera inspection, photographs of the insulation installation, a WUFI analysis to examine the wall build up prior to construction, and a range of other steps and contractual inclusions to help protect the designed performance of the home in how it is constructed.

If you'd like to learn more about this for your project, I'm going to pop some links in the resources for this episode. Because after the conversation I had with Melanie, she sent me an email that said:

In the podcast I know we spoke about As-Built Verification as being one of the weakest links in achieving a thermally comfortable and energy efficient home.

Obviously, if you go down the PassivHaus route this problem is eliminated but for your listeners who choose to go with NatHERS or even Basix there are some good resources to help them be better educated in checking that they are getting a good result during the construction phase.

Sustainability Victoria has produced the 'As Built Verification Factsheet & Checklist' and explainer videos that have been produced by the fellas at Efficiency Matrix, which are great and really should be watched prior to reading the checklist.

A big thank you Mel!

So, I have put those links that Mel kindly sent through into the resources for this episode. These resources have been created by Sustainability Victoria, so there may be some information in there that is climate specific - just review its application for your own climate and region (wherever you're located!)

As always, thank you for tuning in, and for letting me be your secret ally. Until next time, bye.

END OF TRANSCRIPT

RESOURCES

Sustainability Certified Website >>> <https://sustainabilitycertified.com.au/>

Residential Scorecard >>> <https://www.homescorecard.gov.au/>

True Zero Carbon Challenge Winners >>> <https://www.designmatters.org.au/Web/Web/True-Zero-Carbon-Challenge/2022-TZCC-Winners.aspx?hkey=572fdd57-2a16-4c74-97f6-e8eeba879dc1>

Melanie and Lachy's winning entry >>> <https://www.facebook.com/designmatters.org.au/photos/a.325362570872156/8194283077313360>

Passive House episodes on the podcast

- What is Passive House (or Passivhaus) | Episode 105 >>>> <https://undercoverarchitect.com/podcast-what-is-passive-house-passivhaus-daniel-kress/>
- The Client who wanted a Passive House | Episode 106 >>>> <https://undercoverarchitect.com/podcast-what-is-passive-house-passivehaus-homeowner-owl-woods/>
- The Architect who designed a Passive House | Episode 107 >>>> <https://undercoverarchitect.com/podcast-what-is-passive-house-passivehaus-architect-talina-edwards/>
- The Consultant who tests and measures the Passive House | Episode 108 >>>> <https://undercoverarchitect.com/podcast-what-is-passive-house-passivehaus-certified-consultant-luc-plowman/>
- The Builder constructing Passive House | Episode 109 >>>> <https://undercoverarchitect.com/podcast-what-is-passive-house-passivehaus-builder-stuart-lee/>
- The Certifier and an Australian Passive House Pioneer | Episode 110 >>>> <https://undercoverarchitect.com/podcast-what-is-passive-house-passivehaus-certifier-clare-parry/>
- The Passive House Renovator | Episode 111 >>>> <https://undercoverarchitect.com/podcast-what-is-passive-house-passivehaus-renovation-armadale-house/>
- [Sustainability Victoria Resources](#)

Videos are here: <https://www.sustainability.vic.gov.au/energy-efficiency-and-reducing->

[emissions/building-or-renovating/7-star-homes-program/7-star-homes-program-resources/insulation-installation-and-air-tightness](#)

ABV Factsheet and Checklist is here: <https://assets.sustainability.vic.gov.au/susvic/Document-energy-7-Star-Homes-as-built-verification-ABV-factsheet-and-checklist.pdf>

Additional info here: <https://www.sustainability.vic.gov.au/energy-efficiency-and-reducing-emissions/building-or-renovating/7-star-homes-program/7-star-homes-program-resources/the-ins-and-outs-of-as-built-verification>

Access the support and guidance you need to be confident and empowered when renovating and building your family home inside my flagship online program >>> <https://undercoverarchitect.com/courses/the-home-method/>

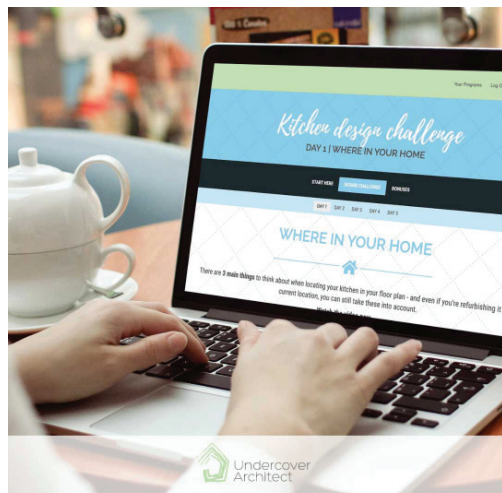
Learn more about how to get started with your home design with the Happy Home Design mini-course >>> <https://undercoverarchitect.com/courses/happy-home-design>

Access my free online workshop “Your Project Plan” >>> <https://undercoverarchitect.com/projectplan>

SO ARE YOU READY TO *Get Started!*

There is so much help available for you on Undercover Architect. Read, watch and listen so you learn how to get it right in your future family home - simply and with confidence. Whoever you're working with, or whatever your dreams, your location or your budget. And keep this handy book close for all your dreaming and planning.

Undercover Architect also has a range of online mini-courses and DIY programs to assist in specific areas of your project planning. Head to the website for info.



Introducing ...

the
HOME
method

Empowering you to expertly navigate the process of designing, building or renovating your family home

[LEARN MORE](#)



HOME Method is Undercover Architect's flagship online program and membership for homeowners planning to renovate or build their future family homes.

Based on Amelia Lee's own step-by-step process, and tried and tested on millions (and millions) of \$\$\$ of family homes, this online program is for those who are researching their projects, about to start designing, already designing, or ready to choose a builder.

HOME Method Online Program gives you access to all of the information and knowledge you need to create the home you can't wait to live in.

The HOME Method includes:

- A step by step guide to your overall project journey, with tools and tactics to use.
- A deep dive into the construction phase to keep you confident and in control.
- Loads of helpful bonuses, checklists, and guides to simplify your project overall (plus maintain your sanity and save you time)
- Access to our private Facebook group and fortnightly Q & A sessions for 1:1 personalised support throughout your project.
- No expiry on your access, so join now, and move through at your own pace.

The HOME Method will transform your renovation or building experience - and the finished home waiting for you at the end of your journey.

To learn more about the HOME Method and join, head here >>>

www.homemethod.com.au

What people say ...

ABOUT UNDERCOVER ARCHITECT

"You have helped us move forward with clarity and confidence, and it's great hearing every tradie or supplier I talk to saying "Wow, you've really done your homework!" Yep, I listen to Amelia!" - Kate

"I have been binge reading your entire blog! Thanks for sharing your expertise and experience, it's a great resource." - Jane

"Searching through the website is like scanning great tomes of knowledge with pages of advice to point the right direction. Thoroughly recommend Amelia's advice as a preparatory step to getting the most from your home with the ideal journey to attaining it." - Andrew

"The information Amelia shares is literally life changing." - Lanc

"We've decided to defer our build so we can listen to all of these podcasts and be better informed. Thank you so much for all your knowledge and way of speaking that is so easy to listen to." - Kate

"Don't attempt to build or renovate without listening to Undercover Architect. I guarantee it will improve your build and / or save you money." - Nick

BE SURE TO CHECK OUT WWW.UNDERCOVERARCHITECT.COM +

LOTS MORE EPISODES ON THE

"GET IT RIGHT WITH UNDERCOVER ARCHITECT"

PODCAST



You can find the #2 podcast on the Undercover Architect website, and also on iTunes, Spotify, Stitcher (and any other podcast app you use!). It's free and awesome to listen to!



Undercover
Architect

hello@undercoverarchitect.com | www.undercoverarchitect.com

