

Self-Paced  
100% Online  
Start Any Time  
18 months to complete



**CPP41119**

**Certificate IV in**

**Home Energy Efficiency & Sustainability**



# Transformed: Our Story

Hi and welcome to Transformed!

Our mission is to help people to develop the skills and knowledge to get a pay rise, get a promotion or get their dream job.

As an award-winning Registered Training Organisation, we have worked with thousands of people and both large and small organisations since we started in 2006.

We deliver nationally-recognised qualifications and engaging, interactive online short courses in home energy efficiency, thermal performance, building and sustainability.

Designed and taught by passionate industry experts, our courses empower people with the skills and confidence to stay ahead of the industry curve, build a future-ready career, and transform their lives.

Some of our awards...



# What is Home Energy Efficiency and Sustainability?

NatHERS or thermal performance assessors are specialists engaged by building designers to model residential buildings to determine their thermal performance in accordance with technical regulations. This is required to be done for new houses and apartments as part of the development application. In NSW BASIX is used. Existing houses are rated in different states under different schemes.

This involves:

- Interacting with building designers
- Taking information off plans and drawings
- Entering data into NatHERS software and modelling the building
- Producing a NatHERS Certificate
- Making recommendations where improvements are needed.

Many thermal performance assessors (TPA) and home sustainability consultants work for small businesses or set up their own business and work for themselves.

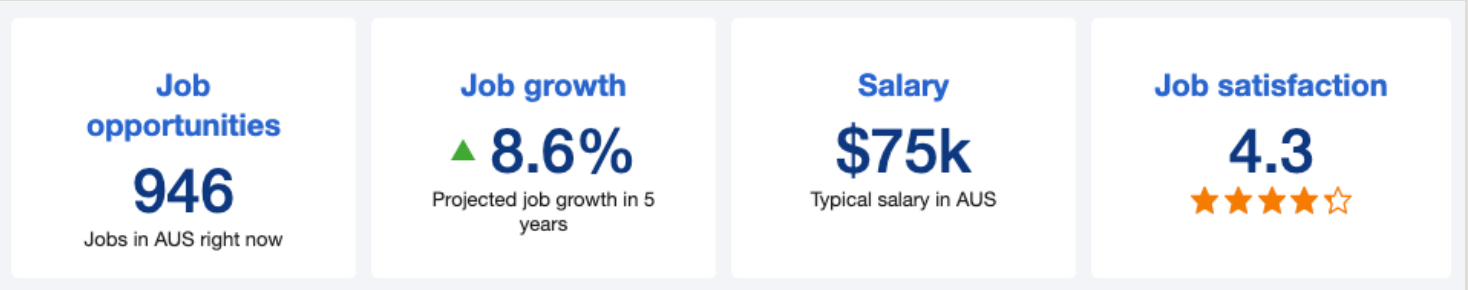
# Energy Efficiency and Sustainability Career Options

A NatHERS Assessor has a starting salary of around \$60k with no industry experience. This range goes up to \$80k for people with 5 years+ experience working in the industry. While NatHERS Assessors who are self-employed will make upwards of \$80-120k.

Source: <https://www.certifiedenergy.com.au/>

Thermal performance assessors and home sustainability assessors often work for themselves and set up their own small business once they gain their Accreditation. Some work for smaller firms who specialise in this work. We also see Architects and Building Designers gain their accreditation as a NatHERS Assessor - they generally review and conduct thermal performance assessments on their own work.

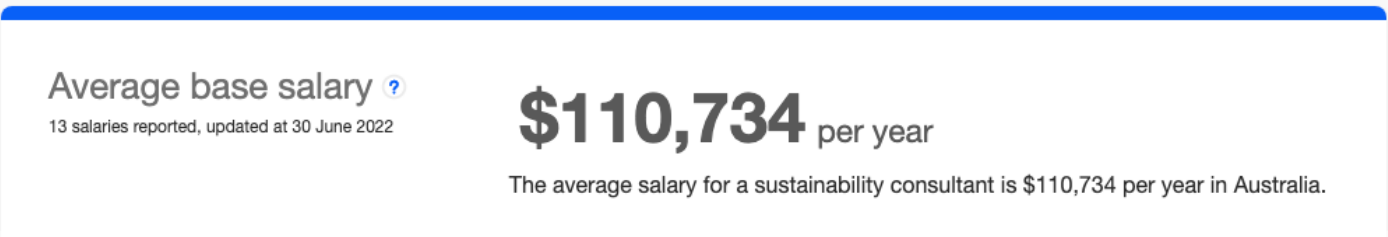
Unfortunately there is no ANZSCO code for these roles, so there is no census data or salary data that has been published by Government or recruiting firms. We have to use approximations.



Home sustainability assessment and thermal performance assessments growing fields in property and the build environment. Seek reported a 8.6% growth in jobs in the aligned field of Building Design. Seek's most recent data also show that job satisfaction is high and also the pay is great.

Data as of June 2022 - [seek.com.au](https://www.seek.com.au)

Job search site, Indeed, publish career and salary information on their website. In June 2022, they indicated that sustainability consultants earn on average \$110,000.



Source: <https://au.indeed.com/career/salaries/sustainability?from=whatwhere>

## Why choose this course?

Every year more than 200,000 new houses and apartments are approved for construction. In parallel, energy prices are rapidly rising so house holders are looking for ways to reduce energy costs. Government is also raising the bar in terms of energy efficiency for new builds.

It has never been a better time to become a TPA or a home sustainability consultant.

This program is especially designed for individuals who wish to become:

- an Accredited NatHERS Assessor,
- an Accredited Residential Scorecard Assessor
- a BASIX Assessor or
- a home sustainability assessor or consultant.

You'll graduate with the knowledge and skills need to work as a NatHERS Assessor and become an Accredited Assessor. You will also become proficient in using HERO software to model houses, apartments and building thermal performance.

**Every new residential dwelling needs to meet thermal performance requirements. These requirements are getting more stringent over time as Government increases energy efficiency requirements.**

**Existing homes are also being assessed as part of the NatHERS Whole of Home or Victorian Residential Scorecard Assessments.**

**Help clients reduce their heating and cooling costs by ensuring houses and apartments have better thermal performance.**



# Why Study with us?

---



## **NATIONALLY RECOGNISED QUALIFICATION**

Receive a nationally-recognised qualification in procurement and contracting upon successful completion. As a Registered Training Organisation, we are quality assured by the Australian Skills Quality Agency, part of the Australian Government.



## **INDUSTRY DEFINED CONTENT**

The Certificate IV is developed by an industry reference group that ensures the curriculum meets real-world industry needs now and in the future.



## **LEARN BY DOING**

Get hands-on with practical activities during the course and as part of your assessment. These tasks are what you'll do in your future job as a thermal performance assessor.



## **SELF-PACED, START ANYTIME**

No need to wait for the next semester, you can start anytime and work around your busy schedule with our self-paced program.



## **MULTIPLE AWARD WINNING TRAINING PROVIDER**

We have won many education and business awards and are recognised as a leader in the field.



## **LEARN FROM INDUSTRY EXPERTS**

Our trainers and assessors are highly experienced and passionate experts in thermal performance assessments and home sustainability.



## **LIVE LESSONS**

Live instructor led lessons are delivered every 2 weeks. Ask questions and interact with other students during these live sessions.



## **SUPPORT WHENEVER YOU NEED IT**

Our trainers and assessors are only an email or phone call away whenever you need help.

---

## **What our clients say...**

*Just wanted to say thank you so much for offering such a great course. I have really enjoyed studying my Certificate IV in Home Energy Efficiency and Sustainability with Transformed.*

*The course is really well organised, your videos and zoom meetings were extremely helpful, the platform functions perfectly, your response time to queries and questions is always prompt and overall, it is just been a wonderful experience.*

# Learning Outcomes & Content

## What you get...

- Over 100 hours of instructional videos and customised learning materials written by leading industry experts
- Instructional videos showing how to use our e-learning system
- Easy to follow 'fill in the template' style, knowledge and performance assessments
- Live Lessons and recorded webinars on each core module and elective, providing a summary of all content as well as instructions, tips and tricks for completing assessment questions and tasks
- Access to our exclusive NatHERS Assessor Facebook community, allowing you to interact with other students and industry experts who will answer your questions and share their tips and tricks (valued at \$1500)
- NatHERS templates, checklists and tools (valued at \$500)
- Access to relevant Australian and International Standards and key government and industry references (valued at \$900)
- 18 hours of live, online, instructor lead Master Class in HERO by Australia's leading qualified HERO instructor.
- Detailed feedback on your thermal performance assessments.

## On completion of the course, you will be able to:

- User Accredited NatHERS Software (HERO) to conduct NatHERS regulatory assessments of:
  - single-storey houses, duplexes and town houses
  - double-storey homes
  - Individual apartments and blocks of apartments
  - studios
  - buildings with alterations and additions
  - three storey buildings with lifts
  - Split level homes
- Conduct assessments of existing buildings, including energy efficiency and water efficiency of appliances
- recommend improvements to building design and select high performing building materials within a set budget
- Manage both your own work performance and your safety and security in different work situations.
- **gain Accreditation as a NatHERS Assessor**
- Take the next step to become a Victorian Residential Scorecard Assessor

## Course at a glance...

To achieve the qualification you must complete 15 subjects (4 core and 9 electives).

### Core Units

- BSBRSK401 – Identify risk and apply risk management processes
- CPPCOM4001 – Manage own work, professional development and ethical behaviour
- CPPHES4001 – Research and assess impact of building elements on thermal performance of residential buildings
- CPPHES4002 – Advise clients on thermal performance of residential buildings

### Elective Units

- CPPCMN4008 – Read plans, drawings and specifications for residential buildings
- CPPHES4003 – Operate and maintain computer system to support thermal performance assessments
- CPPHES4004 – Conduct thermal performance assessment of residential buildings
- CPPHES5001 – Conduct thermal performance assessment of complex residential buildings
- CPPCOM4002 – Implement safe work practices in the property industry
- CPPHES4005 – Assess household energy use and efficiency improvements
- CPPHES4006 – Assess household water use and efficiency improvements
- CPPHES4007 – Assess thermal performance of existing residential buildings
- CPPHES4009 – Promote the adoption of home sustainability practices
- CPCCBC4014 – Prepare simple building sketches and drawings
- CPPCMN3004 – Respond to enquiries and complaints.



### Method of Study

- 100% online
- Live Lessons
- Videos and student learner guides



### Time Commitment

- 18 months to complete online
- 5-8 hours per week



### Assessment

- Knowledge questions
- Practical assessment tasks
- Assessed against the competency standards within the Property Services Training Package



### Pre-requisite

- No pre-requisites
- Must have access to a computer and the internet or an internet-enabled device



### Software Master Class

- 18 hour master class HERO Software
- brings together all you have learned
- gets you industry ready, so you can hit the ground in your new job.

# What you'll learn

---

## **Identify risk and apply risk management processes**

This module provides the skills and knowledge required to identify risks and to apply established risk management processes for a thermal performance or home sustainability assessor.

It applies to individuals with a broad knowledge of risk analysis or project management who contribute well developed skills in creating solutions to unpredictable problems through analysis and evaluation of information from a variety of sources. They may have responsibility to provide guidance or to delegate aspects of these tasks to others.

## **Manage own work, professional development and ethical behaviour**

This module discusses skills and knowledge required to adhere to regulatory requirements, organise own work commitments, maintain professional competence and model ethical practice while working as a home sustainability assessor or a thermal performance assessor.

## **Read plans, drawings and specifications for residential buildings**

This unit ensures assessors understand how to read and extract key details from plans, drawings and specifications that are needed to enter into NatHERS software to undertake regulatory assessments.

## **Research and assess impact of building elements on thermal performance of residential buildings**

This module specifies the skills and knowledge required to research and assess the impact of construction materials and methods, design elements and building condition on thermal performance of residential buildings.

This unit is for individuals who work independently as home sustainability or Nationwide House Energy Rating Scheme (NatHERS) assessors using specialised knowledge to complete thermal performance assessments of residential buildings.

## **Assess thermal performance of existing residential buildings**

This module covers the skills and knowledge required to source and analyse information on the thermal performance of existing residences. It includes providing advice on ways to improve thermal performance accounting for ownership and type of building, costs and practicalities of implementing improvement recommendations.

This unit is for individuals who work independently as home sustainability assessors using specialised knowledge to complete thermal performance assessments.

## What you'll learn -2

---

### **Conduct thermal performance assessment of residential buildings**

This module covers the skills and knowledge required to analyse information to assess the thermal potential of the building envelope of planned residential buildings, and the thermal performance of existing residential buildings, including alterations and additions. Assessments involve a variety of building designs and materials across all jurisdictions using the regulatory mode of software accredited under the Nationwide House Energy Rating Scheme (NatHERS).

### **Conduct thermal performance assessment of complex residential buildings**

This module is an extension of the one above, focussing on assessing the thermal performance complex buildings using NatHERS software.

### **Advise clients on thermal performance of residential buildings**

This module covers what is required to explain the factors that contribute to the thermal performance of residential buildings when providing advice to clients as part of a home sustainability or NatHERS assessment. It includes explaining the heat transfer process, factors that impact thermal comfort, how climatic conditions, building design and materials influence thermal performance, and the principles of passive design.

### **Assess household water use and efficiency improvements**

This module focuses on sourcing and analysing information on household water use and to advise on ways to improve water efficiency and conservation in the home. This unit is for individuals who work independently as home sustainability assessors using specialised knowledge to complete household water assessments.

### **Operate and maintain computer system to support thermal performance assessments**

This module describes what is required to operate and maintain a computer system and software applications to support thermal performance assessments using accredited Nationwide House Energy Rating Scheme (NatHERS) software. It includes installing and updating software and hardware and performing computer configurations, routine data back-ups, troubleshooting and system maintenance.

### **Implement safe work practices in the property industry**

This module covers the skills and knowledge required to apply work health and safety (WHS) practices and measures to manage risks to self, others and property while working in the property industry.

## **Prepare simple building sketches and drawings**

This module covers preparing sketches and drawings used for communicating ideas to clients and other parties. It includes capturing design concepts and options taken from architectural drawings to create simpler versions.

## **Identify and apply sustainability rating tools**

This module covers what is required to effectively use rating tools to obtain a sustainability rating.

## **Respond to enquiries and complaints.**

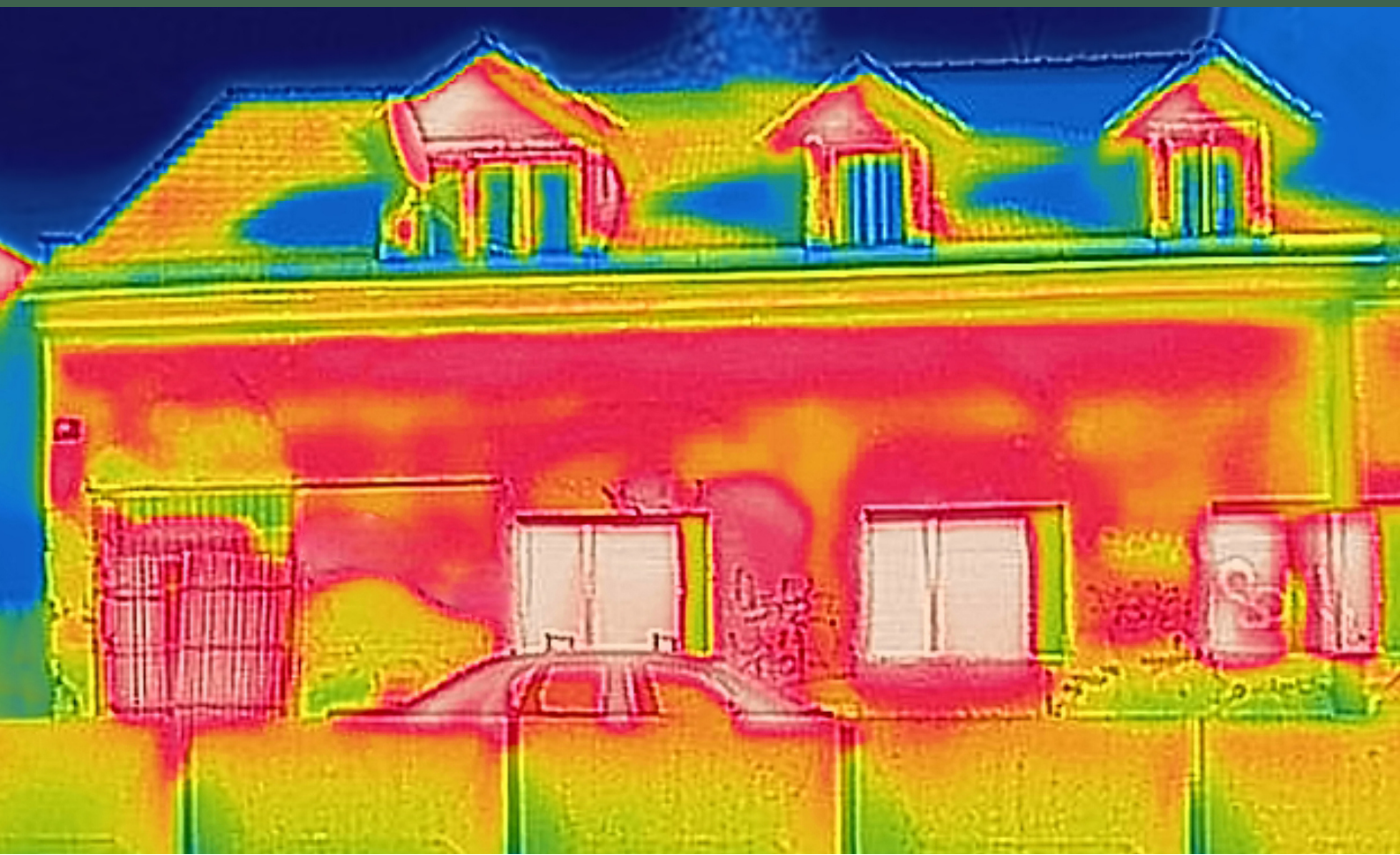
This module the outcomes required to respond effectively to client enquiries and complaints regarding company products and services. The worker needs to handle formal and informal enquiries, as well as negative feedback and complaints from clients.

## **Assess household energy use and efficiency improvements**

This module covers required to source and analyse information on household energy use and to advise on ways to improve energy efficiency and reduce energy costs in the home.

On successful completion you will graduate with

# **Certificate IV in Home Energy Efficiency and Sustainability (Home Sustainability Assessment and Thermal Performance Assessment streams)**



## Course Timeframe

The completion timeframe for this qualification is 18 months.

You're provided with a detailed study plan to help with planning out your effort and study timeline.

The flexibility of online learning allows you to complete the course sooner if you want.

## Assessment

Participants are required to undertake a number of assessment activities, including:

- Various work-based assessment tasks; and
- Completion of written question and answers.

Easy to follow templates and instructions are provided.

Assessment for the Certificate IV in Home Energy Efficiency & Sustainability is against the competency standards within the Property Services Training Package (CPP).

## Get in Touch

Speak to one of our Education Advisors:

E: [enquiries@transformed.com.au](mailto:enquiries@transformed.com.au)

P: 1300 738 720

Check out our youtube channel for answers to Frequently Asked questions about RPL and how to choose an RTO.



## Support & Feedback

The Transformed team will support you every step of the way to achieve your study goals.

From our Student Engagement and Student Administration team to the trainers and assessors - you've got access to decades of vocational education experience and thermal performance assessment specialists.

Your enrolment allows exclusive access to our Facebook Group - NatHERS Assessor Network. Here you can network with your peers and other industry specialists on all things thermal performance and NatHERS assessments.

Our blog keeps you up to date with what's happening in the thermal performance assessment space.



**ENROL NOW**